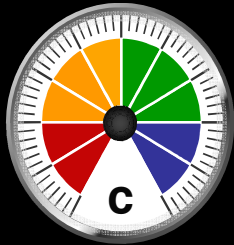


**OVERALL EFFECTIVENESS:  
HOW GOOD IS THE SCHOOL ?**

**OUTCOMES FOR INDIVIDUALS AND GROUPS OF PUPILS**

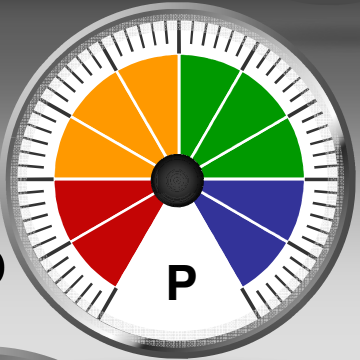
**BEHAVIOUR & SAFETY**



**ATTAINMENT  
PROGRESS**



**QUALITY OF TEACHING**



**LEADERSHIP AND MANAGEMENT**



-  Outstanding
-  Good
-  Satisfactory
-  Inadequate

**SCHOOL INSPECTION**

**S.M.S.C**

**BEHAVIOUR & SAFETY**

**ACHIEVEMENT**

**TEACHING**

**L & M**

This handout is not complete and is only shown here to illustrate the range of materials and activities used on several of the interactive school based workshops @



**Communicating ambition & driving improvement**

- Governance
- CPD
- Partnerships
- SDP
- **SEF**